

JK-8670B

产品使用说明书&产品零件图册

Manual book & parts book

JACK 杰克

目录/CONTENTS

使用说明	1
套筒部件/Bushing assembly	5
车壳部件/Frane assembly	7
罩壳部件/Cover assembly	9
缝台部件/Cloth plate assemblies	11
下轴部件/Hook shaft assemblies	13
上轴部件/Main shaft assemblies	15
针杆部件/Needle bar assemblies	17
弯针部件/Looper drive mechanism	19
送布部件(1)/Need mechanism(1)	21
送布部件(2)/Need mechanism(2)	25
送布部件(3)/Need mechanism(3)	29
压布部件/Presser foot mechanism	31
喂针部件/Needle feeding assemblies	33
松线部件/Thread loosing assemblies	35
过线部件/Thread guide assemblies	37
打线凸轮部件/Looper thread handling	39
润滑部件/Lubrication assemblies	41
油泵部件/Oil pump assemblies	43
硅油盒装置部件/Silicon oil delice assemblies	45
油盘托板部件/Oil plate assemblies	47
线架部件/Thread apool assemblies	49
专用部件(1)/Specific parts(1)	51
专用部件(2)/Specific parts(2)	53
附件部件/Accessories assemblies	55

△ 为了安全

对于缝纫机本身各种装置，我们充分考虑到它的安全性。请遵照基本的操作方法，安全的进行工作。

●拆除为保证安全所设置的装置，零件的情况下使用，是非常危险的，请绝对不要拆除后使用。

●缝纫机在使用时，请不要在缝纫机台板上放置工具及缝纫时不必要的物品。

●在对缝纫机进行检修、调节、清扫、穿线、换针等工作时，为防止发生事故，务必请切断电源，在确认即使踩下缝纫机踏板，缝纫机也不转动之后，再进行操作。

△ OBSERVE THESE SAFETY PRECAUTIONS

Though Our takes the utmost care to produce safe sewing machines and devices, operators should follow these basic safety rules.

●To prevent accidents, do not remove safety devices or parts while operating the machine.

●Do not leave tools or other unnecessary objects on the machine table while operating the machine.

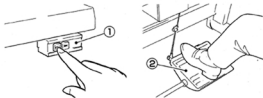
●Before maintenance, adjusting, cleaning, threading or replacing the needle, and to prevent accidents, be sure the power is turned off. Check that the machine will not operate when the pedal is pressed.

注意

使用离合式马达的情况下，在关掉电源①后因惯性作用会继续旋转。这时如不注意踩动缝纫机踏板②时，缝纫机会突然动作，这是很危险的。请在关掉电源后，仍继续踩动踏板②，直至缝纫机完全停下来为止。

Note

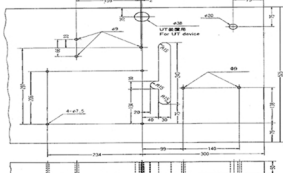
In case a clutch type motor is used, it will keep on rotating by inertia after turning off power supply. ①If the machine pedal ②is stepped on inadvertently, it is dangerous because the machine will move unexpectedly. keep on stepping on the pedal ② until the machine comes to a stop after turning off power supply.



- 在离开缝纫机台时，务必请关掉电源。
- 停电时也请务必关掉电源。
- 为了总是安全地，运转良好的使用缝纫机，日常的点检是不可缺少的，请予以注意。

- Turn the power off before leaving the machine table.
- In the event of a power failure, be sure to turn the machine off.
- Check that the machine is securely grounded.

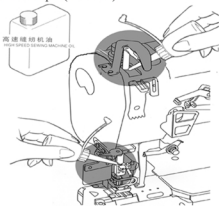
1. 台板加工图 Schematic diagram to the machine 请参照下图进行台板的加工 Cut the referring the diagram



2. 手动给油 Manual lubrication 手动给油是在缝纫机最初开始使用时，或相当一段时间重新开始时使用时，请供给2~3滴油。

机油请使用本公司指定的(HIGH SPEED SEWING MACHINE OIL)(ISO粘度与VG22相同)。Apply 2 or 3 drops of oil by hand when the machine is used for the first time or has been left unused for some time.

Note: Utilife [HIGH SPEED SEWING MACHINE OIL] recomendado por (ISO VG22)



3. 手动给油脂 Lubricating with grease 手动给油脂是在缝纫机最初开始使用时，或使用了三个月后，请注入油脂。

机油请使用公司指定的 (HIGH SPEED SEWING MACHINE GREASE)
The sewing machine should be lubricated with grease manually before it is used for the first time or after a period of break. Please add grease.
Please use the HIGH SPEED SEWING MACHINE GREASE SPECIFIED BY OUR CORPORATION.



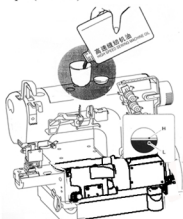
4. 供油 Lubrication

加油量是使油面处于H线与L线之间为好。当油量低于L线时,就要及时补充机油。

机油请使用本公司指定的 (HIGH SPEED SEWING MACHINE OIL) (ISO粘度与VG22相同)。

After filling the oil pan, the oil surface should lie between (H) and (L) lines. Add oil, when the oil surface reaches or goes below (L).

Note: Unifice [HIGH SPEED SEWING MACHINE OIL] recomendado por (ISO VG22).



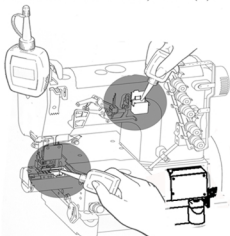
5. 给HR装置供油 Filling the HR device with silicon oil

为了防止布纤维或线被切断,请尽早给HR装置供油。

注:硅油请使用本公司指定的冷却油。[请使用日本 UNION CARBIDE(株)的UCCL-45(10)]

Fill the device with oil before it is too low in order to prevent needle thread breakage and fabric damage.

Note: Use our recommended silicon oil. (UNION CARBIDE CORPORATION) UCCL-45(10).



6. 穿线的方法 Threading

(1) 请掀起护眼, 打开机盖 (2处)。

Open the eye guard and two covers.

(2) 把机上原有的线与缝纫用线绑结在一起。

Knot the preset thread and the thread being used together to thread the machine.

(3) 针线 将线拉到针跟前, 剪掉结头再次穿好针线。

Needle thread Trim the knots off neatly before passing through the eye of the needle to thread.

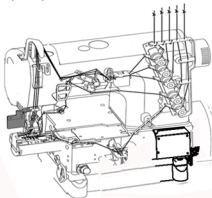
(4) 弯针线, 上装饰线

直到拉出接头迁来后, 用剪刀剪齐接头, 整齐。

Looper thread, Top cover thread

Trim the knots off neatly after passing through the eye of the looper.

若机上原来没有线, 请参照穿线图正确进行穿线。Be sure to thread the machine correctly by referring to the threading diagram. (See P5)



7. 穿线图 (2针, 3针用) Threading diagram

①. 若使用伸缩大的线时, 为点线A的方向。(通常为实线方向) Broken lines (A) For more stretchable thread.

②. 装饰线太松弛时用B, 装饰线太紧时用D

If the top cover thread is too loose, use broken line (B). If the top cover thread is still too loose after thread with broken line (B), use broken (C). If the top cover thread is too tight, use broken line (D).

③. 穿伸缩大的线时 穿伸缩小的线时

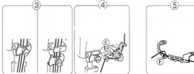
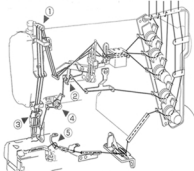
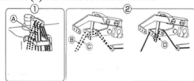
For more stretchable thread For less stretchable thread

④. 穿伸缩大的线时用点线E方向

Broken lines (E) For more stretchable thread

⑤. 若使用伸缩大的线时, 为点线F方向。(通常为实线方向)

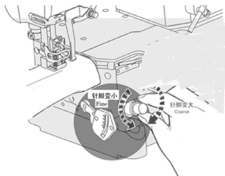
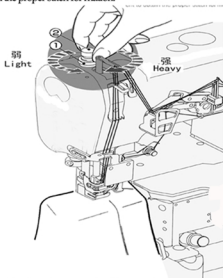
Broken lines (F) For more stretchable thread.



8. 压脚压力调节 Presser foot pressure

压脚压力的调节是松开螺帽①和旋转螺丝②来进行的。在能取得平稳针脚的范围内，尽量调得松一些为好。

Loosen adjusting (1) nut and turn adjusting screw (2) to adjust the presser foot pressure. It should be as light as possible, yet be sufficient to obtain the proper stitch for mation.



11. 线状态的调节 Thread tension

线状态的调节是用针线状态螺帽①，上装饰线状态螺帽②，下针状态螺帽③来进行调节。

Mack tension adjustments with the needle thread knob (1), top cover thread knob (2), and looper thread knob (3).

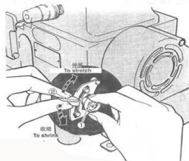


9. 差动比的调节 Diff feed ratio adjustment

差动比是通过松开螺帽①后，把调节杆②上下移动来进行调节的，调节后请拧紧螺帽①。

Adjusting the diff. feed ratio

Loosen nut (1) and move the lever up (2) and down to obtain the correct differential feed ratio, then tighten nut (1).

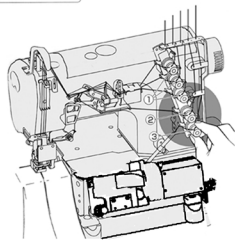


10. 针脚长度的调节 Stitch length adjustment

调节针脚的长度，请先松开螺钉①，然后动螺母②进行调节。

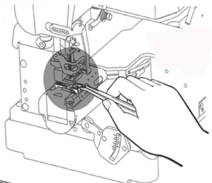
注：针脚长度的调节务必请在调节差动比之后进行。
Loosen adjusting (1) nut and turn adjusting screw (2) to adjust the presser foot pressure.

Note: Stitch length adjustment must only be made after the differential feed ratio has been changed.

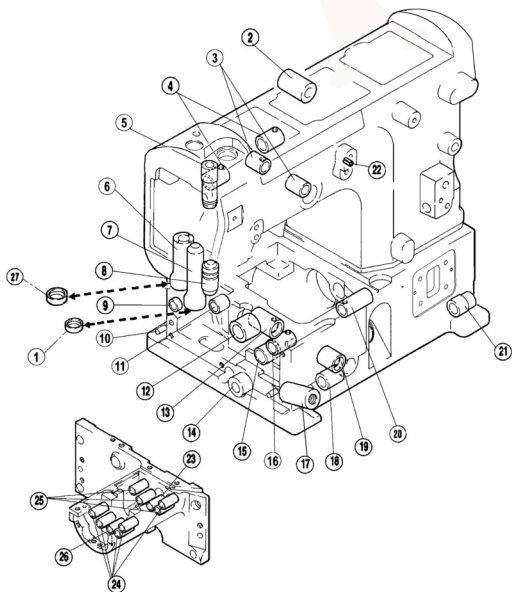


12. 缝纫机的清扫 Cleaning the machine

缝纫机的清扫，以针板槽及送牙周围为主。Mainly the slots of needle plate and the feed rolls should be cleaned.



套筒部件 / Bushing Assembly

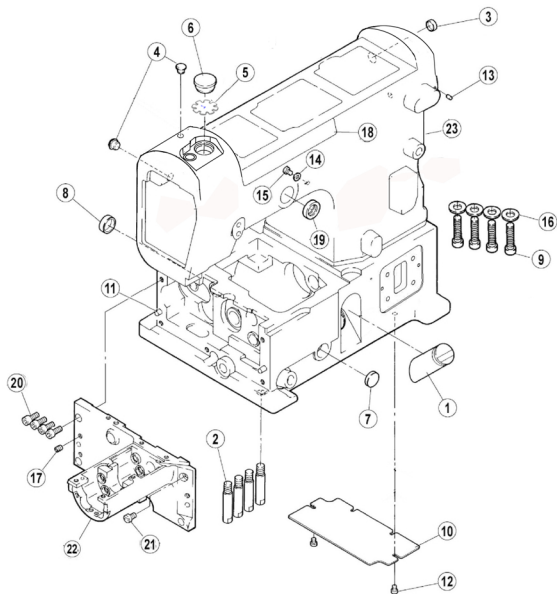


套筒部件 / Bushing Assembly

序号 Ref. No.	件号 Part No.	参考件号 Ref.Part.No.	名称	Description	数量 Amt.
1	30122039	-----	油封	Oil Seal	1
2	30103036	-----	压脚扳手轴套筒	Sleeve	1
3	30103042	210297	过线座轴前后套筒	Sleeve	2
4	20103047	250141	送布轴右套筒	Sleeve	2
5	30203004	250146	针杆上套	Sleeve	1
6	30203025	250136	喂针轴套	Sleeve	1
7	30203024	250147	压脚轴套	Sleeve	1
8	30203005	251003	针杆下套	Sleeve	1
9	30703012	-----	轴套	Sleeve	1
10	P01006	-----	销 5X10	Pin	2
11	30703014	-----	轴套	Sleeve	1
12	30703013	-----	前下轴套	Sleeve	1
13	30203010	250144	下弯针轴后套	Sleeve	1
14	30203011	250139	针距轴套	Sleeve	1
15	30703011	-----	送料轴套	Sleeve	1
16	30203015	-----	抬牙轴中套	Sleeve	1
17	30203012	-----	调节座套	Sleeve	1
18	30203022	250194	差动扳手轴前套	Sleeve	1
19	30203009	250191	下弯针轴前套	Sleeve	1
20	30203016	204089	抬牙轴后套	Sleeve	1
21	30203023	250195	差动扳手轴后套	Sleeve	1
22	P03005	-----	销4×8	Pin	1
23	30703015	-----	护针轴套(后)	Sleeve	1
24	30703009	-----	送料轴套(前)	Sleeve	5
25	30703010	-----	送料轴套(后)	Sleeve	3
26	30703016	-----	护针轴套(前)	Sleeve	1
27	20622019	210586	油封	Oil Seal	1

注：[]点划线框表示暂时不用或已改进的零部件。

一、车壳部件 / Frane Assembly

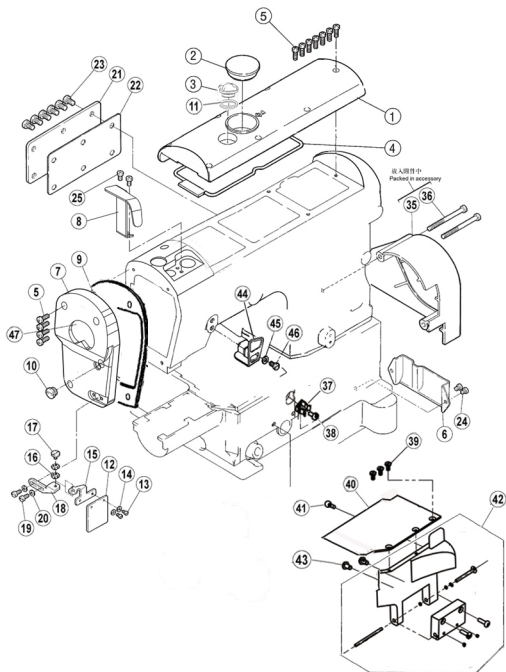


一、车壳部件/Frane Assembly

序号 Ref. No.	件号 Part No.	参考件号 Ref. Part No.	名称	Description	数量 Amt.
1	30111001	206590	油标	oil sight gauge	1
2	301S30001	250117	机壳螺钉	bed pin	4
3	10122003	240228	油封	plug	1
4	30122006	240052	油封	plug	2
5	24012048		油封垫		1
6	30122005	240110	油封	plug	1
7	20122009	210586	油封II	plug	1
8	30222002	209084	油封	plug	1
9	S05001	螺钉M10×27.5	screw	4
10	30112002	250020	盖板	cover	1
11	P02001		销5×10		2
12	S01002	7017	螺钉M4×6.5	screw	2
13	30122010	240127	油堵	mark	1
14	W02003	垫圈10	washer	4
15	S01004	7018A	螺钉M4×5.5	screw	1
16	W01001	303448	垫圈4	washer	1
17	S10006	4539	螺钉M5×6	screw	1
18	30737002	2503920	JK-8670商标牌(长条)	name plate	1
19	20622019	油封	plug	1
20	S05003	螺钉 M5×10	screw	4
21	S01011	螺钉 M5×10	screw	1
22	301231	缝头(喷漆)	sewingmachine head	1
23	301451	机壳(喷漆)	main case	1

注: [] 点划线框表示暂时不用或已改进的零部件。

二、罩壳部件 / Cover Assemblies

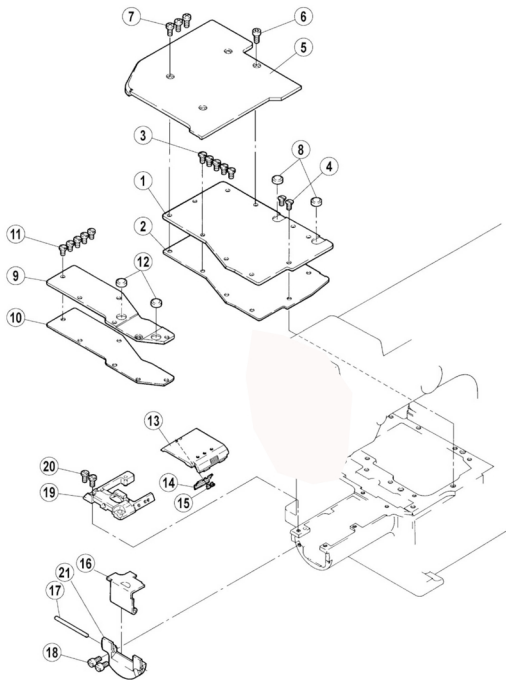


二、罩壳部件/Cover Assemblies

序号 NO.	公司件号 Part NO.	参考件号 Ref.Part No.	名称	Description	数量 Amt.
1	301433	上盖(喷漆)	arm cover(top)	1
2	30122012	240226	密封盖	plug	1
3	20711005	179107-05	油窗盖	oil sight window	1
4	30122013	250019	上盖密封圈	O ring	1
5	S04019	7021	螺钉M4×12	screw	11
6	30212004	250159	护护板	air guide	1
7	301432	250151DVD	机头左盖(喷漆)	arm cover(left)	1
8	30112102	250012	针杆护罩	needle bar guard	1
9	30222019	250153	机头左盖密封圈	O ring	1
10	10122003		面板调节孔塞		1
11	21022003		油窗垫		1
12	30111003	250257	有机玻璃罩	eye guard	1
13	S01006	7009	螺钉M3×4.5	screw	2
14	W01002	202875	垫圈3	washer	2
15	30112005	250256	护罩架	bracket	1
16	W03001	210307	波形垫圈6	washer	2
17	301S20001	7066	护罩座固定螺钉	screw	1
18	30112004	250255	护罩座	bracket	1
19	S01004	7019	螺钉M4×7.8	screw	2
20	W01001	303448	垫圈4	washer	2
21	30212002	250154	后盖板	arm cover(rear)	1
22	30222004	250155	后盖板垫	gasket	1
23	S01060	7052	螺钉M6×10	screw	6
24	S01065	7079	螺钉M5×6	screw	2
25	S01004	7019	螺钉M4×7.8	screw	2
35	30111011	250022ETBO	带轮护罩	pulley cover	1
36	207S11016	7075	螺钉M4x16	screw	2
37	30227030		卡簧		1
38	S01002		螺钉M4x6.5		1
39	S02001		螺钉M4x6		3
40	303801		前面板上盖(喷漆)		1
41	30226028		卡位销钉		1
42	303802		前门板组件(喷漆)		1
43	30222006		防震垫		2
44	30112006		过线护罩		1
45	W02004		垫圈6		1
46	S01060		护罩螺钉		1
47	30137004		商标牌		4

注: □ 点划线框表示暂时不用或已改进的零部件。

三、缝台部件 / Cloth plate Assemblies

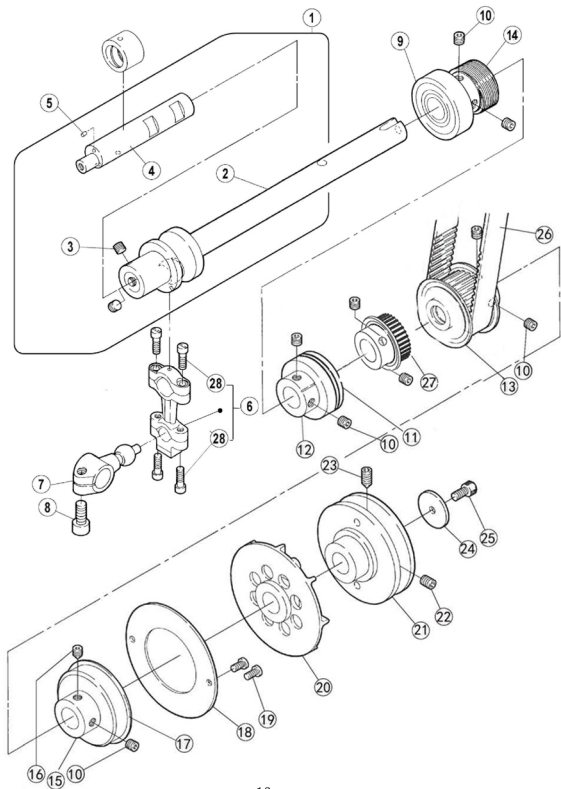


三、缝台部件/Cloth plate Assemblies

序号 Ref. No.	件号 Part No.	参考件号 Ref. Part No.	名称 Name	Description	数量 Amt.
1	30712002	2504010	盖板(右)	top cover(right)	1
2	30722001	2504020	盖板垫(右)	gasket	1
3	L02001	7019	螺钉M4×8	screw	5
4	S02004	7043	螺钉M4×8	screw	2
5	301242	240411-PD0	平台板(喷漆)	bed cover	1
6	S01085	4524	螺钉M4×10.2	screw	1
7	S01085	4524	螺钉M4×10.2	screw	3
8	30722002	2504210	防振垫	cushion rubber	2
9	30712004	2504030	盖板(左)	top cover(left)	1
10	30722003	2404040	盖板垫(左)	gasket	1
11	L02001	7019	螺钉M4×8	screw	5
12	30722002	2504210	防振垫	cushion rubber	2
13	30701012	2504160	左上盖	cylinder cover	1
14	30727002	2504170	垫盖	flat spring	1
15	207S11024	螺钉M2×3	screw	2
16	30712005	250413-9P0	左盖板	side cover	1
17	30726001	2501730	销	pin	1
18	403S13011	4527	螺钉	screw	2
19	3071500100	251030-910	针板架组件	needle plate bracket assembly	1
20	S01010	7019	螺钉M4×8	screw	2
21	301241	前盖板(喷漆)	The front cover	1

注: [] 点划线框表示暂时不用或已改进的零部件。

四、下轴部件 / Hook shaft Assemblies

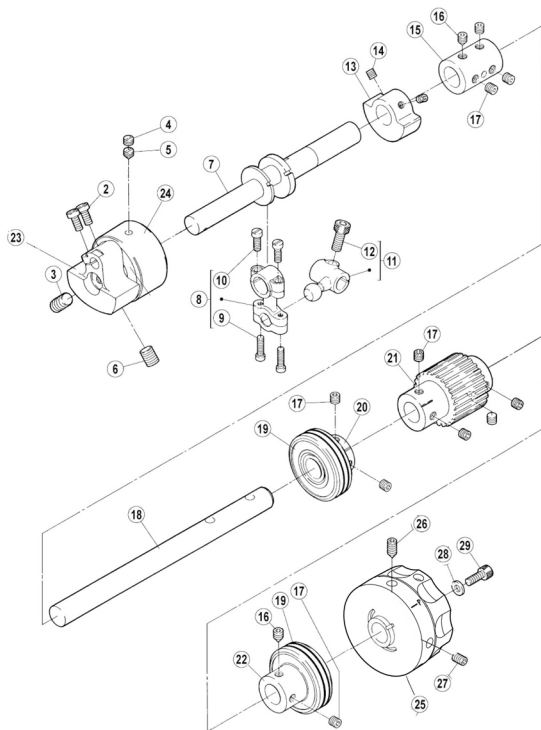


四、下轴部件/Hook. shaft Assemblies

序号 NO.	公司件号 Part NO.	参考件号 Ref. Part No.	名称	Description	数量 Amt.
1	3070200100	250572-910	下轴组件	crankshaft assembly	1
2	400079	250554-92	下轴后轴	crankshaft	1
3	S10029	7128	螺钉M6×0.75×5	screw	2
4	30702002	250573-910	下轴(前)	crankshaft	1
5	P03033	销1.5×4.5	pin	1
6	400070	210091-92	球连杆组件	connection	1
7	400228	252026-92	球曲柄	crank	1
8	S05002	4534	螺栓M6×0.75×15.2	screw	1
9	3012400400	250557-91	油封轴承	bearing	1
10	S10029	4547	螺钉 M6×0.75×5	screw	9
11	3012400400	250557-91	油封轴承	bearing	1
12	30103006		中轴套	bushing	1
13	3023501700	401	后组同步带轮	gear (lower)	1
14	30103008	250544	钢杆	bushing	1
15	30103009	250530-91	轴承套	bushing	1
16	S12003	4555	螺钉M6X0.75X7	screw	1
17	B01003		轴承6304Z	bearing	1
18	30108001	250514	挡圈	ring	1
19	S01004	7018A	螺钉M4X7.8	screw	1
20	30201006	250556	风扇	fan	1
21	30535003	250661	皮带轮	machine pulley	1
22	S10009	4556	螺钉M6X8	screw	1
23	S12001	4541	螺钉M6X8	screw	1
24	30128005	240126	垫圈	washer	1
25	S05003	4500	螺钉M5X10	bolt	1
26	30235020	206050C	同步带	timing belt	1
27	3023501800	402	前组同步带	gear(lower)	1
28	S01008	5376	螺钉M4X13	screw	1

注: [] 点划线框表示暂时不用或已改进的零部件。

五、上轴部件 / Main shaft Assemblies

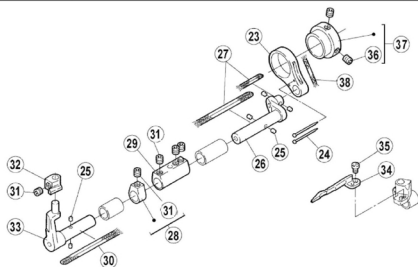
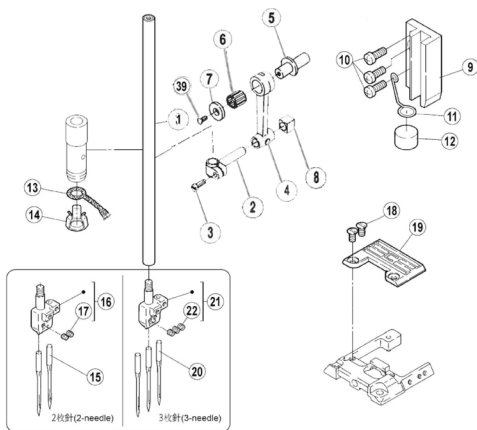


五、上轴部件 / Main shaft Assemblies

序号 Ref. No.	件号 Part No.	参考件号 Ref.Part.No.	名称	Description	数量 Amt.
2	S01011	7028	螺钉 M5×10	Screw	2
3	301S10004	4592	螺钉M8×1×12(进口)	Screw	1
4	S11001	7152	螺钉 M6×0.75×6	Screw	1
5	S08001	7153	螺钉 M6×0.75×3.5	Screw	1
6	S10004	4592	螺钉M8×1×12(进口)	Screw	1
7	400065	250560A	上轴	Crankshaft	1
8	400061	253500-92	连杆组件	Connection assembly	1
9	S01003	007015A	螺钉 M4×12	Screw	2
10	S01008	007021A	螺钉 M3.5×13	Screw	2
11	400225	253501A	球曲柄	Crank assembly	1
12	S05002	4534	螺钉M6×0.75×15.2	Screw	1
13	30109003	250524	上轴平衡块	Balance weight	1
14	S10027	4514	螺钉 M5×5(进口)	Screw	2
15	30103004	250506	接轴套	Bushing	1
16	S12003	4555	螺钉 M6×0.75×7(进口)	Screw	2
17	S10029	4547	螺钉 M6×0.75×5(进口)	Screw	10
18	30202004	250552	后轴	Shaft	1
19	3012400400	250529-91	油封轴承	Bearing	2
20	30103012	250529	轴承套	Bushing	1
21	30235004	250547A	上轴同步带轮	Gear (upper)	1
22	30103014	250528	轴承套	Bushing	1
23	400308	250516B92	针杆曲柄(21/23)	Motion assy	1
24	30224005	250526	针杆曲柄轴承	Bushing	1
25	301434	250566-YD	手轮 (喷漆)	Handwheel	1
26	S12001	4556	螺钉 M6×8	Screw	1
27	S10009	4541	螺钉M6×8	Screw	1
28	W01004	204585	垫圈 5	Washer	1
29	S05004	4501	螺钉M5×14	Screw	1

注：□□□点划线框表示暂时不用或已改进的零部件。

六、针杆部件 / Needle bar Assemblies

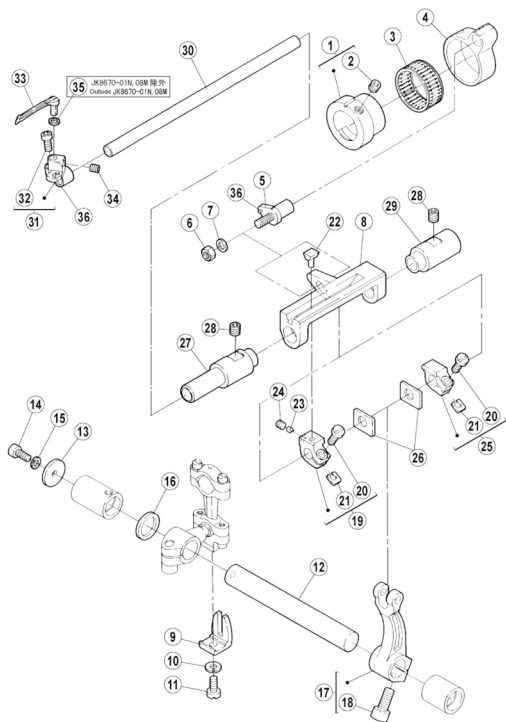


六、针杆部件 / Needle bar Assemblies

序号 Ref. No.	件号 Part No.	参考件号 Ref.Part.No.	名称	Description	数量 Amt.
1	30202024	251014-91	针杆	Needle bar	1
2	30102009	206061	针杆轧头	Needle bar clamp	1
3	301S11009	5325	针杆轧头螺钉	Screw	1
4	30205002	251016	针杆连杆	Link	1
5	30102050		连杆偏心轴		1
6	B07001		轴承8*12*12		1
7	30128030		垫圈		1
8	30109004	206053	针杆滑块	Guide block	1
9	30209002	251017	滑块导座	Guide	1
10	S01003	7021	螺钉M4×12	Screw	3
11	30227003	251018	毛毡弹簧	Latch	1
12	30123002	179040-05	毛毡	Sponge	1
13	20523003	212186	油线	Oil string	0.1M
14	30112009	206524	油线托	Oil string retainer	1
15	30117001	-----	机针 (UY128GAS11#)	Needle	2
16	30134006	-----	240针舌	Needle holder	1
17	S10026	4554	螺钉M3×3(进口)	Screw	2
18	302S17001	005511-HC	螺钉(进口)	Screw	2
19	30715003	-----	针板	Needle plate	1
20	30117001	-----	机针 (UY128GAS11#)	Needle	3
21	30134001	-----	356针舌	Needle holder	1
22	S10026	4554	螺钉M3×3(进口)	Screw	3
23	400420	2515340	连杆	Rod	1
24	30126009	210766	销	Pin	2
25	30223009	207925	油堵	Felt	6
26	30702003	2515650	护针轴 (后)	Crankshaft	1
27	20523003	212186	油线	Oil string	0.13M
28	30708002	240548-920	挡块	Collar	1
29	30708001	2515370	连接套	Joint	1
30	20523005	212186	油线	Oil string	0.09M
31	S10007	4543	螺钉M4×4	Screw	5
32	30717001	-----	后护针	Needle guard (rear)	1
33	30702004	2515360	护针轴 (前)	Needle guard (rear)	1
34	30717002	-----	前护针	Needle guard (front)	1
35	S01063	7031	螺钉M2.5×6	Screw	1
36	S10007	4543	螺钉M4×4	Screw	2
37	30710001	251533-920	偏心套	Eccentric	1
38	20523005	212186	油线	Oil string	0.07M
39	S02007		螺钉	Screw	1

注：□□□点划线框表示暂时不用或已改进的零部件。

七、弯针部件 / Looper drive mechanism

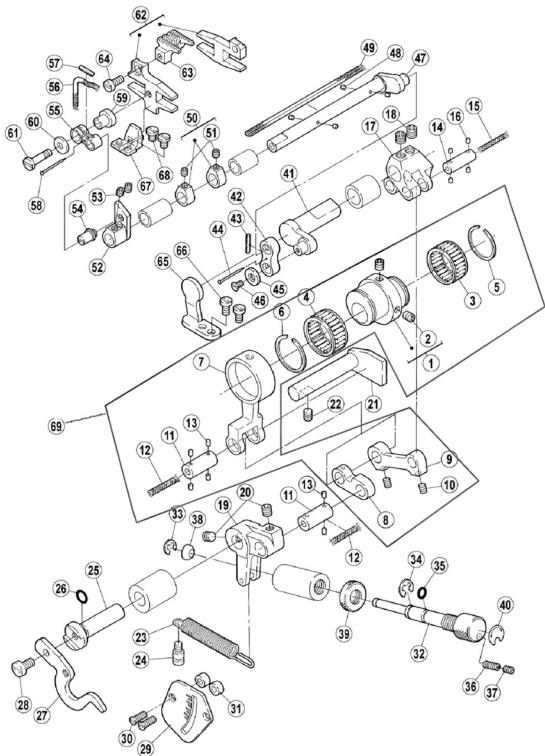


七、弯针部件 / Looper drive mechanism

序号 Ref. No.	件号 Part No.	参考件号 Ref.Part.No.	名称	Description	数量 Amt.
1	30210002	252036-92	偏心套	Eccentric	1
2	S10015	7128	螺钉 M6×0.75×4	Screw	1
3	B07009	206172	轴承 K26×30×12	Needle bearing	1
4	30205003	252035	连杆	Rod	1
5	30226005	252037-91	滑杆销	Pin assembly	1
6	N01004	4805	螺母M5	Nut	1
7	W01004	240062	垫圈 5	Washer	1
8	30201010	252039	滑杆架	Looper shaft guide	1
9	30109001	201074	比叉	Guide	1
10	W02001	202286	垫圈5	Washer	1
11	301S11004	4019	比叉螺钉	Screw	1
12	30202007	252044	下弯针连杆轴	Shaft	1
13	30228006	240232	垫片	Washer	1
14	S05048	4524/7110	螺钉M4X10	Bolt	1
15	W02002	201252	垫圈4	Washer	1
16	30228005	240231	垫片	Washer	1
17	30204004	252046-92	下弯针轴曲柄	Lever	1
18	S05002	4534	螺钉 M6×0.75×15.2	Screw	1
19	30201011	252040-92	前挡块	Holder	1
20	S04019	7021A	螺钉M4×12	Screw	2
21	30228003	252041	垫片	Washer	2
22	30209003	252042	滑块	Slider	1
23	30209004	252043	油堵	Pin	1
24	S10007	4543	螺钉M4×4	Screw	1
25	30201012	252045-92	后挡块	Holder	1
26	30228004	252047	挡块垫片	Washer	2
27	30703001	2520770	下弯针轴前轴套	Bushing	1
28	S10013	4522	螺钉M6×6	Screw	2
29	30203007	252052	后套(后轴)	Bushing	1
30	30202006	252048	滑杆	Shaft	1
31	30701007	252075-910	弯针头	Looper holder	1
32	S05046	7145	螺钉M3.5×9.5	Screw	1
33	30217003	257566	弯针	Looper	1
34	S10016	7129	螺钉M4×5	Screw	1
35	30728001	2405060	垫片	Washer	1
36	30226017	-----	弹性圆柱销	Pin	2

注：[]点划线框表示暂时不用或已改进的零部件。

八、送布部件(1) / Need mechanism(1)

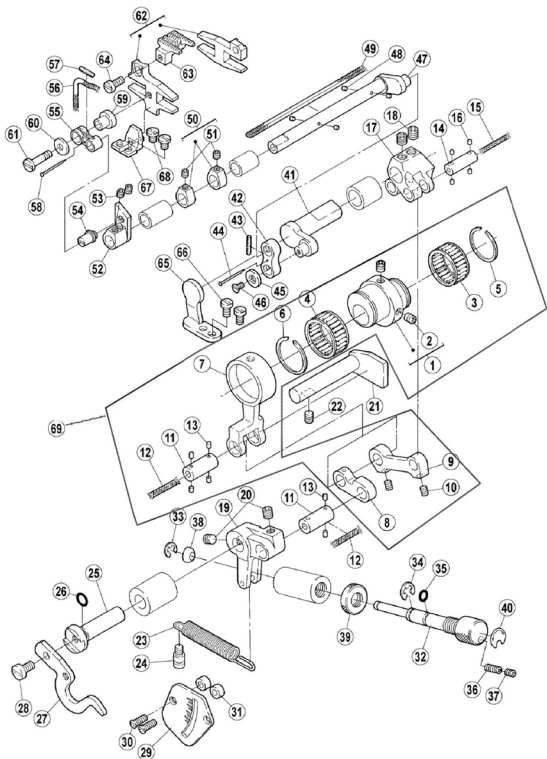


八、送布部件(1) / Need mechanism(1)

序号 Ref. No.	件号 Part No.	参考件号 Ref.Part.No.	名称	Description	数量 Amt.
1	30210003	252607-92	送布偏心轮	Eccentric	1
2	S10006	4539	螺钉M5×6	Screw	2
3	B07007	204084	轴承22×26×10	Needle bearing	1
4	30224001	240236	轴承28×24×13	Needle bearing	1
5	30229001	240234	卡簧	Ring	1
6	30229002	240237	卡簧	Ring	1
7	30205005	252612	偏心连杆	Rod	1
8	30205007	252614	针距轴杆	Link	1
9	30205006	202176	连杆	Link	1
10	S10007	4537	螺钉M4×4	Screw	2
11	30226007	252613	连杆销	Pin	2
12	20123021	202176	油线	Oil string	0.06M×2
13	30223009	207925	油毛毡	Felt	6
14	30226008	252616	曲柄销	Pin	1
15	20123021	202176	油线	Oil string	0.06M
16	30223009	207925	油毛毡	Felt	4
17	30704001	2526770	曲柄	Crank	1
18	S10013	4547	螺钉M6×6	Screw	2
19	30204007	25218-91	调节曲柄	Link	1
20	S10029	4547	螺钉M6×0.75×5	Screw	2
21	30202008	252622	针距调节挡板	Guide	1
22	S10006	4539	螺钉M5×6	Screw	1
23	30227005	252620	拉簧	Spring	1
24	302S30001	7131	螺钉	Screw	1
25	30202009	252621	针距指示轴	Shaft	1
26	O01022	240017	O型圈7×1.5	O ring	1
27	30712006	2527020	差动指示板	Lever	1
28	S01011	7028	螺钉M5×10	Screw	1
29	30712007	2527010	刻度板	Indication plate	1
30	S02008	7083	螺钉M4×10	Screw	2
31	30711002	2403210	垫圈	Spacer	2
32	30202010	252625	针距调节轴	Screw	1
33	H05012	201629	挡圈4	Ring	1
34	H05006	200983	挡圈5	Ring	1
35	O01023	240251	O型圈5×1.5	O ring	1
36	S09015	4550	螺钉M4×10	Screw	1
37	S10007	4537	螺钉M4×4	Screw	1
38	30209006	252626	垫块	Liner	1

注：□□□点划线框表示暂时不用或已改进的零部件。

八、送布部件(1) / Need mechanism(1)

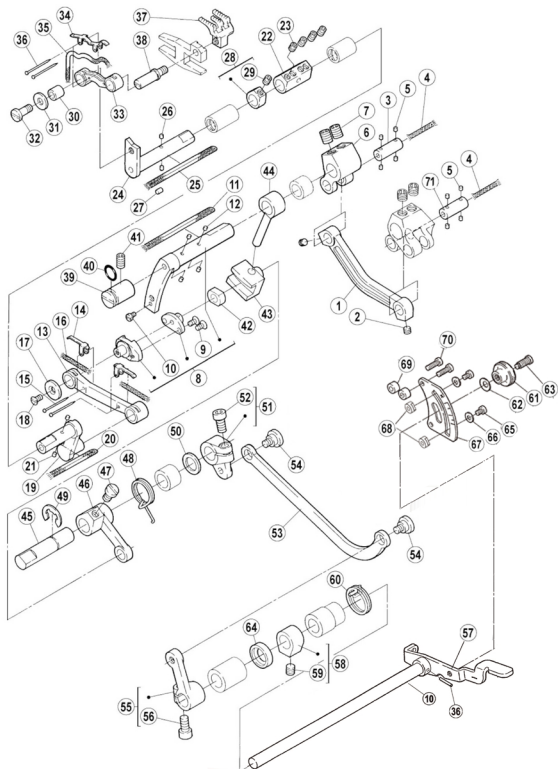


八、送布部件/Need mechanism(1)

序号 Ref. No.	件号 Part No.	参考件号 Ref. Part No.	名称	Description	数量 Amt.
39	302S16001	252660	调节螺母	nut	1
40	30237001	252671	指示板	seal	1
41	30702005	2526780	送料轴(前)	crankshaft	1
42	400419	2526790	连杆	link	1
43	20123021	202176	油线	oil string	0.07M
44	30126009	销	pin	1
45	30228007	240055	垫圈	washer	1
46	S02013	7041	螺钉M3×6	screw	1
47	30702006	2526800	送料轴	crankshaft	1
48	30223009	207925	油毛毡	oil string	4
49	20123021	202176	油线	oil string	0.65M
50	30708003	240549-920	挡块	collar	2
51	S10007	4537	螺钉M4×4	screw	2
52	30704002	2527060	曲柄	crank	1
53	S10007	4537	螺钉M4×4	screw	2
54	30726004	2527080	销	pin	1
55	30705003	2527090	连杆	link	1
56	20123021	202176	油线	oil string	0.2M
57	20123021	202176	油线	oil string	0.07M
58	30126009	2107660	销	pin	1
59	30726008	2527270	轴承内套	spacer	1
60	20628012	2041150	垫圈5	washer	1
61	307S20001	7314	轴位螺钉	screw	1
62	400397/400407	252731-910	牙架组件	feed bar assembly	1
63	30714001	主送布齿	main feed dog	1
64	S01005	7020	螺钉M4×10	screw	1
65	30712008	2526950	挡板	guide	1
66	403S13011	4527	螺钉	screw	2
67	400487	252729-910	挡板	guide assembly	1
68	S01055	7143	螺钉M4×5.5	screw	2
69	3021000300	252607	送布偏心轮组件	feed eccentric wheel assem	1

注：[]点划线框表示暂时不用或已改进的零部件。

九、送布部件(2) / Need mechanism(2)

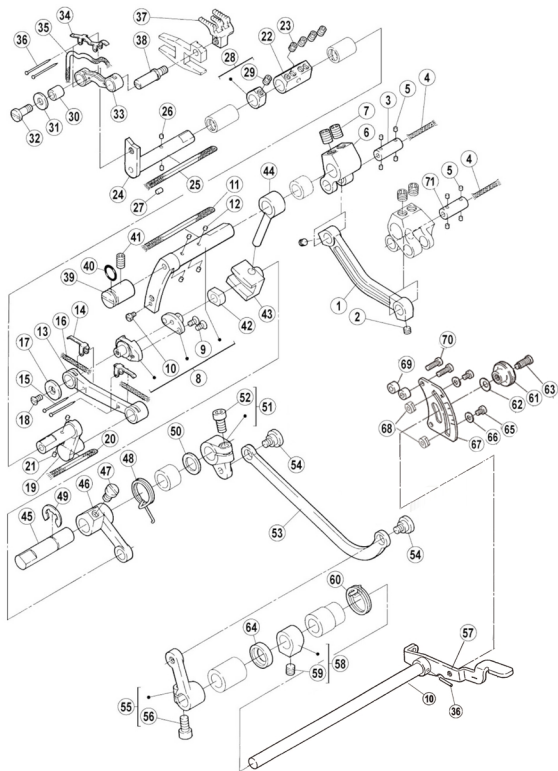


九、送布部件(2)/Need mechanism(2)

序号 Ref.No.	件号 Part No.	参考件号 Ref.Part No.	名称	Description	数量 Amt.
1	30705004	2526810	连杆	link	1
2	S10007	4543	螺钉M4×4	screw	2
3	30226008	252616	曲柄销	pin	1
4	20123021	202176	油线	oil string	0.06M
5	30223009	207925	油毛毡	felt	8
6	30204006	252617	曲柄	crank	1
7	S10029	7142	螺钉M6×0.75×5	screw	2
8	3070200700	252685-910	送料轴组件	crankshaft	1
9	S02013	7041	螺钉M3×6	screw	2
10	S01063	7031	螺钉M2.5×6	screw	1
11	20123021	202176	油线	oil string	0.13M
12	30223009	207925	油毛毡	felt	4
13	30705005	2526870	连杆	link	1
14	30712010	2527260	油线压板	latch	2
15	30126009	210766	销	pin	2
16	20123021	202176	油线	oil string	0.03M
17	30228007	240055	垫片	washer	1
18	S02013	7041	螺钉M3×6	screw	1
19	30705006	2526880	送料轴	crankshaft	1
20	20123021	202176	油线	oil string	0.07M
21	30223009	207925	油毛毡	felt	2
22	30708004	2527160	连接套	joint	1
23	S10007	4543	螺钉M4×4	screw	4
24	30702009	2527100	送料调节轴	crankshaft	1
25	20123021	202176	油线	oil string	0.13M
26	30223009	207925	油毛毡	felt	2
27	30723006	2067480	油塞	felt	1
28	30708003	240549-920	挡块	collar	1
29	S10007	4543	螺钉M4×4	screw	1
30	30703002	2527250	滚套	spacer	1
31	20628012	204115	垫圈5	washer	1
32	307S20002	7315	轴位螺钉	screw	1
33	30705007	2527110	连杆	link	1
34	30712011	2527200	油线压杆	latch	1
35	20123021	202176	油线	oil string	0.1M
36	30126009	210766	销	pin	2
37	30714002	差动送料齿	differential feed dog	1
38	30726006	2527120	固定齿销	screw	1

注: []点划线框表示暂时不用或已改进的零部件。

九、送布部件(2) / Need mechanism(2)

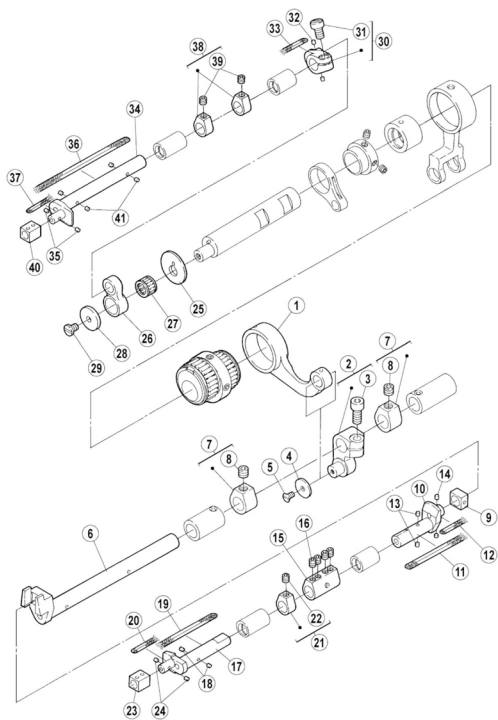


九、送布部件(2)/Need mechanism(2)

序号 Ref. No.	件号 Part No.	参考件号 Ref. Part No.	名称	Description	数量 Amt.
39	30726007	2526990	曲柄销	guide	1
40	001041	2401290	0型圈7.5×1.8	0 ring	1
41	S10006	4540	螺钉M5×8	screw	1
42	30709001	2526410	滑块	block	1
43	30709002	2526860	滑块座	guide	1
44	30704003	2526850	滑块座曲柄	feed bar pin	1
45	30702010	2526910	轴	shaft	1
46	30704004	2526930	曲柄	lever	1
47	S01011	7027	螺钉M5×10	screw	1
48	30727003	2526920	扭簧	spring	1
49	H05008	2025770	开口挡圈8	ring	1
50	30728003	2401020	垫片	washer	1
51	30704005	212035SB920	曲柄	crank	1
52	S05013	4531	螺钉M5×12	screw	1
53	400367	2526900	连杆(成品)	link	1
54	307S20003	7058	轴位螺钉	screw	2
55	30704006	252689-920	曲柄	crank	1
56	S05013	4531	螺钉M5×12	screw	1
57	302021600		差动扳手组件	lever assembly	1
58	30208001	240235-92	挡块	collar	1
59	S10029	4547	螺钉M6×0.75×5	screw	1
60	30227007	252657	扭簧	spring	1
61	302S16003		调节螺母		1
62	30128014		垫圈		1
63	302S30003		螺钉		1
64	30222017		油封		1
65	301S11008		螺钉		2
66	W01006		垫圈4		2
67	30212017		刻度板		1
68	20109005		调节螺母		2
69	30103034		调节套		2
70	S04004		螺钉M4x15		2
71	30726009	曲柄销	pin	1

注: [] 点划线框表示暂时不用或已改进的零部件。

十、送布部件(3) / Need mechanism(3)

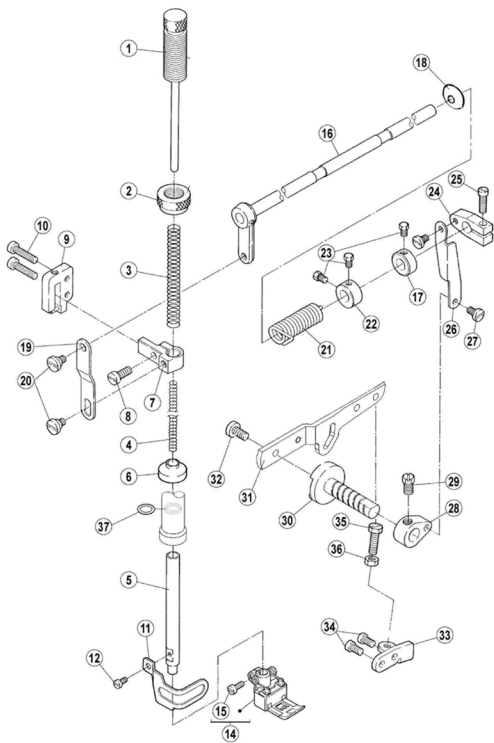


十、送布部件(3) / Need mechanism(3)

序号 Ref. No.	件号 Part No.	参考件号 Ref.Part.No.	名称	Description	数量 Amt.
1	30205004	252608	连杆	Rod	1
2	30204005	252609-92	曲柄	Crank	1
3	S05005	4531	螺钉M5×12	Screw	1
4	30228007	240055	垫圈	Washer	1
5	S02016	7041	螺钉M3×3.2	Screw	1
6	30702011	252610D0	拾牙轴(成品)	Crankshaft	1
7	30208001	240235-92	挡圈	Collar	2
8	S10029	4547	螺钉M6×0.75×5	Screw	2
9	30709004	2526970	滑块	Block	1
10	30702012	2526980	差动轴	Crankshaft	1
11	20123021	202176	油线	Oil string	0.08M
12	20123021	202176	油线	Oil string	0.03M
13	30223009	207925	油毛毡	Felt	2
14	30223009	207925	油毛毡	Felt	2
15	30708004	2527160	连接套	Joint	1
16	S10007	4543	螺钉M4×4	Screw	4
17	30702013	2527130	送料轴	Crankshaft	1
18	30223009	207925	油毛毡	Felt	2
19	20123021	202176	油线	Oil string	0.10M
20	20123021	202176	油线	Oil string	0.04M
21	30708003	240549-92	挡块	Collar	1
22	S10007	4543	螺钉M4×4	Screw	1
23	30709005	2527150	滑块	Block	1
24	30223009	207925	油毛毡	Felt	2
25	400517	2527000	垫片	Washer	1
26	30705009	2527030	开启环	Rod	1
27	30724001	240544-20	滚针K8×11×7.5	Needle bearing	1
28	30128019	204107	垫片	Washer	1
29	207S11009	7143	螺钉M4×7.5	Screw	1
30	30704007	252694-920	曲柄	Crank	1
31	S05003	4500	螺钉M5×10	Bolt	1
32	30223009	207925	油毛毡	Felt	2
33	20123021	202176	油线	Oil string	0.04M
34	30702014	2527140	送料轴	Crankshaft	1
35	30223009	207925	油毛毡	Felt	2
36	20123021	202176	油线	Oil string	0.18M
37	20123021	202176	油线	Oil string	0.04M
38	30708003	240549-920	挡块	Collar	2
39	S10007	4543	螺钉M4×4	Screw	2
40	30709005	2527150	滑块	Block	1
41	30223009	207358	油毛毡	Felt	4

注：□□□点划线框表示暂时不用或已改进的零部件。

十一、压布部件 / Presser foot mechanism

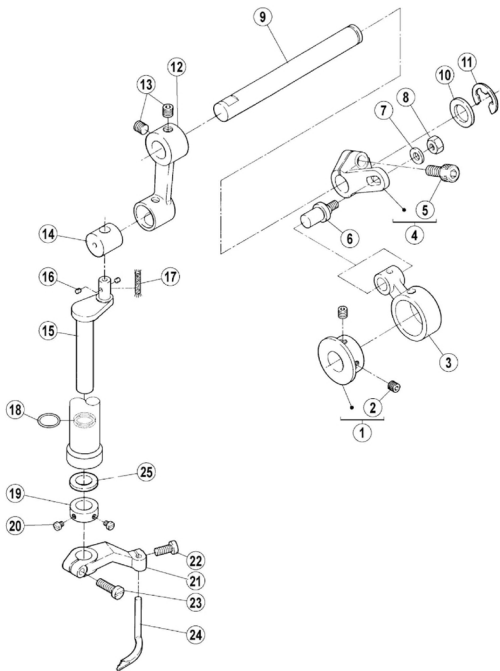


十一、压布部件 / Presser foot mechanism

序号 Ref. No.	件号 Part No.	参考件号 Ref.Part.No.	名称	Description	数量 Amt.
1	3013002500	-----	调压螺杆	Adjusting bar	1
2	301S16005	253003	调节母	Nut	1
3	30227008	240252	调压簧	Spring	1
4	30227009	240253	压脚轴小弹簧	Spring	1
5	30202017	253026	压脚步轴	Presser bar	1
6	30122023	2530530	橡皮封	Oil guard	1
7	30104017	206139	压脚轧头	Presser bar clamp	1
8	301S11009	5118	压脚轧头螺钉	Screw	1
9	3010901700	253005-91	导块销簧组件	Guide	1
10	S11025	7025	螺钉 M4×20	Screw	2
11	30112017	253028	压脚护罩	Finger guard	1
12	S01006	7010	螺钉M3X4.5	Screw	1
14	3011601300	257468-560	压脚	Presser foot assembly	1
15	301S11010	001170-3	压脚固定螺钉	Screw	1
16	3010206400	253008-91	抬压轴曲柄组件	Lever	1
17	30108006	192024	挡圈	Collar	1
18	30122023	253008-4	抬压轴油封	Plug	1
19	30112016	206157	压脚轧头连接板	Link	1
20	301S20007	5386	台螺钉	Screw	2
21	30127009	253010	抬压轴簧	Spring	1
22	30108005	206156	挡圈	Collar	1
23	301S12001	5084	曲柄螺钉	Screw	3
24	30104019	206149	抬压曲柄I	Bell crand (upper)	1
25	301S11011	5187	抬压曲柄螺钉	Screw	1
26	30212018	253027	抬压曲柄连接板	Link	1
27	301S20008	5184	连接板螺钉	Screw	2
28	30104020	206148	抬压曲柄II	Bell crand (lower)	1
29	301S20013	002022-4	抬压曲柄II固定螺钉	Screw	1
30	30102022	253013	抬压轴	Shaft	1
31	30112019	2630060	抬压脚扳手	Lever	1
32	S01011	7028	螺钉 M5×10	Screw	1
33	30112020	253015	抬压曲柄座	Bracket	1
34	S01004	7019	螺钉 M4×7.8	Screw	2
35	S01016	4549	螺钉M5×17	Screw	1
36	N01004	4805	螺母M5	Nut	1
37	O01006	240095	O型圈8.5×1.8	O ring	1

注：□□□点划线框表示暂时不用或已改进的零部件。

十二、喂针部件 / Needle feeding assemblies

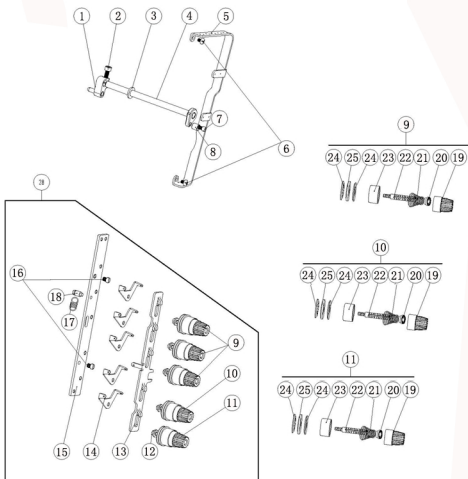


十二、喂针部件/Needle feeding assemblies

序号 Ref. No.	件号 Part No.	参考件号 Ref. Part No.	名称 Name	Description	数量Amt.
1	30110007	254501A	喂针凸轮	eccentric assembly	1
2	S10002	4514	螺钉 M5×5	screw	2
3	400059	254511	喂针连杆	connection	1
4	30104024	254503	喂针摆动曲柄	crank	1
5	S05002	4534	螺钉 M6×0.75×15.2	screw	1
6	30126006	254504	连杆销	screw	1
7	30128032	240062	垫片	washer	1
8	N01004	4805	螺母M5	nut	1
9	30102024	254519	摆动连杆轴	shaft	1
10	30128015	206180	摆动连杆轴垫圈	washer	1
11	H05004	306671	挡圈 12	ring	1
12	30105013	254506B	喂针摆动连杆	crank	1
13	S10029	4547	螺钉 M6×0.75×5(进口)	screw	2
14	30126005	254507	喂针摆动销	block	1
15	30202018	254518	喂针摆动架	crankshaft	1
16	30223009	207925	油毛毡	felt	2
17	20123021	202176	油线	oil string	0.08M
18	001008	233020	O型圈9×1.8	O ring	1
19	20108006	212039	挡圈	collar	1
20	S10026	S071	螺钉	screw	2
21	30104022	254516	喂针架	lever assembly	1
22	S01005	7020	螺钉M4X10	screw	1
23	S01017	7022	螺钉M4×14	screw	1
24	30117005	257565	喂针	spreader	1
25	30128018	喂针摆动轴套垫圈	washer	1

注：[]点划线框表示暂时不用或已改进的零部件。

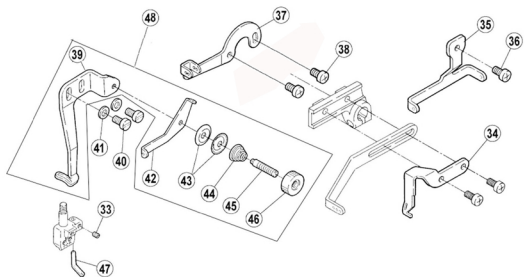
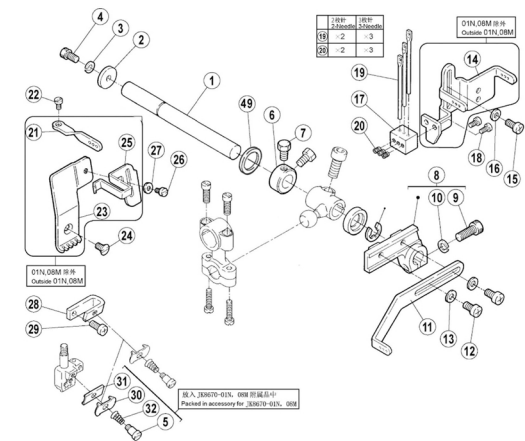
十三、松线部件/Thread loosening assemblies



十三、松线部件/Thread loosening assemblies

序号 No.	件号 Parts No.	参考件号 Ref.Part.No.	名称	Description	数量 Number
1	3010403100	254003B91	松线曲柄I	crank	1
2	S05005	4531	螺钉 M5×12	screw	1
3	W01010	202868	垫圈 8	washer	1
4	3010403200	254000-91	松线曲柄II	lever	1
5	30104048	254008	过线架	thread guide	1
6	S04010		螺钉M4×5.5	screw	2
7	301S11013	12055	轴套紧固螺钉	screw	1
8	30103040	254022	轴套	spacer	1
9	3011300400	254010A9U	调线组件(弱)	tension spring ass	3
10	3011300500	254010B9U	调线组件(中)	tension spring ass	1
11	3011300600	254212C9U	调线组件(强)	tension spring ass	1
12	30103041	206202	调节套	spacer	5
13	30112022	244021	过线调节板	thread releaser	1
14	30113007	254020	二孔过线板I	thread guide	5
15	30113003	254019	过线板	bracket	1
16	S01004	7017	螺钉 M4×7.8	screw	2
17	30127010	306301	调节板簧	spring	1
18	301S30009	5447	调节板螺钉	screw	1
19	301S16006	208447-UA	调压螺母	knob	1
20	30111006	208448	调压止动套	ratchet	1
21	30127013	201068	调压簧(弱)	spring (light)	1
22	301S30010	1817-2A	夹线筴	screw stud	1
23	30111005	208450-UA	调压止动盖	spring shield	1
24	30128016	210319	夹线片	tension disc	2
25	30123027		松线夹线片垫	felt	1
26	30127012	201086	调压簧(中)	spring (medium)	1
27	30127011	201037	调压簧(强)	spring (heavy)	3
28	3011304200	254023E9U	三针过线组件	tension control mec	1
30	30113007	254020	二孔过线板I	thread guide	5
31	30103041	206202	调节套	spacer	5

十四、过线部件 / Thread guide assemblies

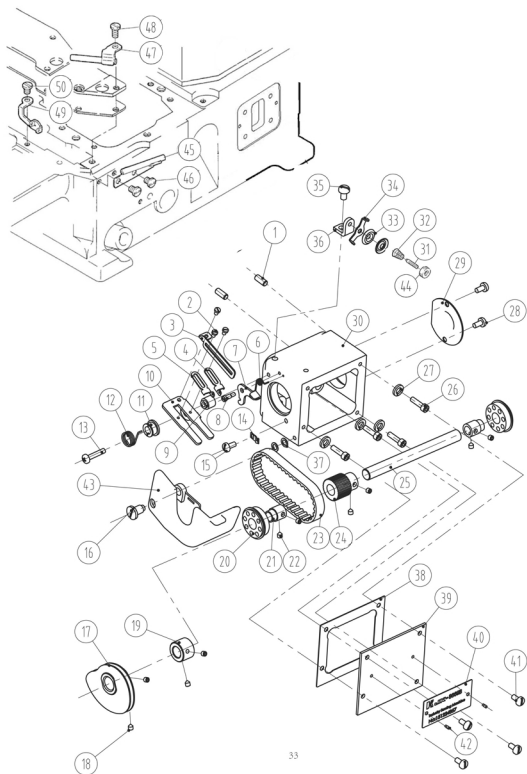


十四、过线部件/Thread guide assemblies

序号 Ref. No.	件号 Part No.	参考件号 Ref. Part No.	名称	Description	数量 Amt.
1	30102028	253503	过线座轴(中轴)	shaft	1
2	30128019	204107	垫片	washer	1
3	W02002	201252	垫圈4	spring washer	1
4	S05048	7110	螺钉M4X10	bolt	1
5	301S20009	0W09070-2	调线螺钉	screw	1
6	20608003	240201	挡圈	collar	1
7	301S12001	2193	曲柄螺钉	screw	2
8	30101018	253504	过线座	lever	1
9	S05004	4501	螺钉M5×14	bolt	1
10	W02001	303067	垫圈5	spring washer	1
11	30113009	253505A	长过线板	thread take-up	1
12	S01004	7019	螺钉 M4×7.8	screw	2
13	W01001	303448	垫圈4	washer	2
14	30112027	253544	硅油盒固定架	thread guide	1
15	S01004	7019	螺钉 M4×7.8	screw	1
16	W01001	303448	垫圈4	washer	1
17	30113012	253545	针杆过线座	holder	1
18	S01006	7009	螺钉M3X4.5	screw	2
19	30113013	234521	过线杆	thread guide	3
20	S10001	4535	螺钉M3×4(进口)	screw	3
21	30113010	253507	三孔过线	thread guide	1
22	S01006	7009	螺钉M3X4.5	screw	1
23	30113011	253508A	过线板	thread guide	1
24	206S30016	7170	螺钉M4X4.5	screw	1
25	30112023	253509A	护线罩	thread support	1
26	S01006	7009	螺钉M3X4.5	screw	1
27	30128034	240474	垫圈	washer	1
28	30112024	253516	夹线座	thread tension bracket	1
29	S01004	7019	螺钉 M4×7.8	screw	1
30	30112026	253593	压线板	tension disc	1
31	30112025	234561	夹线板	thread guide	1
32	30127014	253517	调压簧	spring	1
33	S10026	4554	螺钉M3×3(进口)	screw	1
34	30112028	253506	长过线压板	thread take-up	1
35	30112030	253515	过线板	thread guide	1
36	S01004	7019	螺钉 M4×7.8	screw	1
37	30112029	253514	喂针过线	thread guide	1
38	S01004	7019	螺钉 M4×7.8	screw	2
39	30112031	253548	喂针过线板	thread guide	1
40	301S11024	滑块导座螺钉	screw	2
41	W01001	303448	垫圈4	washer	2
42	30112032	253547	喂针二眼过线	thread guide	1
43	20112033	137108	夹线片	tension disc	2
44	30127016	211388	夹线簧	spring	1
45	301S30011	5387	调压螺钉	screw	1
46	301S16007	5526	夹线螺母	knob	1
47	30112033	253668	喂针小过线	thread guide	1
48	3011203200		喂针二眼过线组件	thread guide	1
49	30128008		挡圈	collar	1

注: [] 点划线框表示暂时不用或已改进的零部件。

十五、打线凸轮部件 / Looper thread handling



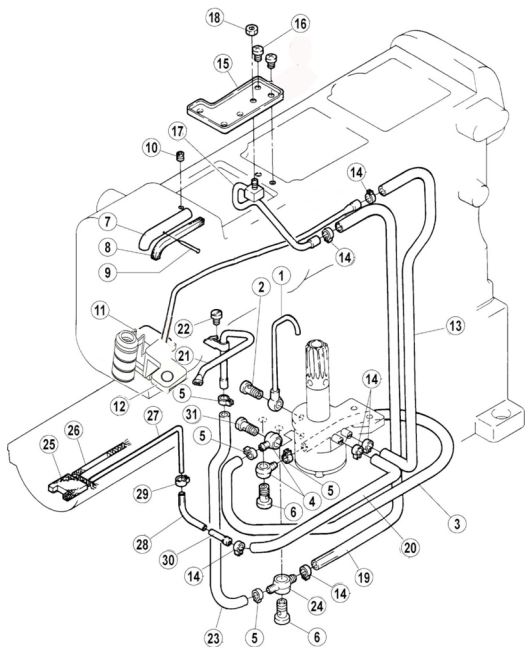
33

十五、打线凸轮部件 / Looper thread handling

序号 No.	件号 Parts No.	参考件号 Ref.Part.No.	名称	Description	数量 Number
1	P01007		定位销	pin	2
2	S010006	7009	螺钉M3×4.5	screw	3
3	30212084	1584	打线片	thread guide	1
4	30313020		过线片(右)	thread guide (right)	1
5	30313019		过线片(左)	thread guide (left)	1
6	30227017	1517	复位弹簧	reset spring	1
7	30212085	1585	打线架扳手	fight line wrench	1
8	302S20008	1508	轴位螺钉	screw	1
9	30208022	1522	挡块	stop	1
10	30212068	1568	打线架	bracket	1
11	30208020	1520	打线架挡圈	Fight line retaining ring	1
12	30227016	1516	复位弹簧	reset spring	1
13	207S11016	007022A	螺钉M4×16	screw	1
14	30227031		卡簧片	spring	1
15	S01002	7017	螺钉M4×6.5	screw	1
16	302S20005		螺钉	screw	1
17	3021302700		打线凸轮组件	looper thread take-up	1
18	S10007		螺钉M4×4	screw	2
19	30208014		定位挡圈	collar	1
20	30224004		轴承6902ZZNR	bearing	2
21	30203038		轴承套	bushing	2
22	S10029	4547	螺钉M6×0.75×5	screw	6
23	30235021		小同步带	small timing belt	1
24	30235019		凸轮轴同步带轮	time belt	1
25	30202062		凸轮轴	shaft	1
26	S05019		螺钉M6×16.3	screw	4
27	W02004	303335	垫圈	sticker	4
28	S01002	7017	螺钉M4×6.5	screw	2
29	30212138		轴承盖板	cover	1
30	30208109	1508	凸轮座	cam seat	1
31	301S30055		调压螺钉	adjusting screw	1
32	30127016	211388	夹线簧	spring	1
33	20112033	137108	小夹线片	thread retainer	2
34	30213009	167079	过线	thread guide	1
35	S01011		螺钉M5×10	screw	1
36	30212134		托板	layer	1
37	W03007		波形弹性垫圈	washer	2
38	30222026	1403	凸轮座密封垫	cam gasket	1
39	30212143	1545	凸轮座盖板	cover	1
40	30137001		机型牌	sticker	1
41	S01002	7017	螺钉M4×6.5	screw	4
42	R03001	210679	销钉2.5×4	pin	2
43	302315		凸轮护罩	shield	1
44	302S16005		调压螺母	adjusting nut	1
45	30713006	253685-910	过线管组件	Thread tube	1
46	S01055	7143	螺钉M4X6	screw	2
47	30713007	253687-910	过线压板组件	Thread tube	1
48	S01010	7082	螺钉M4X6	screw	1
49	30713008	2536750	过线板	Thread guide	1
50	S01010	7082	螺钉M4X8	screw	1

注: [] 点划线框表示暂时不用或已改进的零部件。

十六、 润滑部件 / Lubrication mechanism

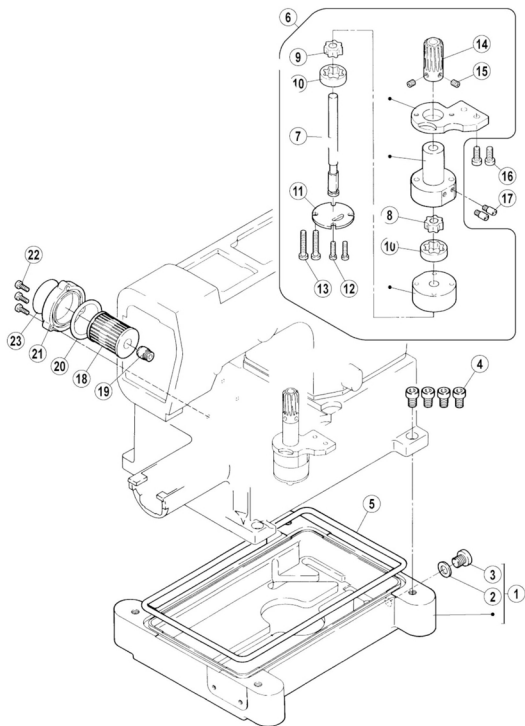


十六、润滑部件 / Lubrication mechanism

序号 Ref. No.	件号 Part No.	参考件号 Ref.Part.No.	名称	Description	数量 Amt.
1	30136003	255035-91	铜油管接头	Pipe	1
2	301S30012	255037	油管螺钉	Joint screw	1
3	30121021	240135	JK-8568 Φ 5 \times Φ 7油管	Tube	0.26M
4	20636001	200136	油管接头	Joint	2
5	30129006	202199	油管卡簧(大)	Clamp	4
6	301S30013	200152	过油螺钉	Joint screw	2
7	30121012	255003	铜油管	Pipe	1
8	30123010	240136	油毡	Felt	1
9	30126009	210766	销	Pin	1
10	S10002	4514	螺钉M5 \times 5	Screw	1
11	30227041		回油毡卡簧		1
12	30223023		针杆回油毡		1
13	30121022	240006	JK-8568 Φ 4 \times Φ 6油管	Tube	0.36M
14	20129002	202199	油管卡簧	Clamp	6
15	30112039	255099	接油盘	Oil release plate	1
16	S01002	7017	螺钉M4 \times 6.5	Screw	2
17	3022100200	255097-91	喷油管	Oil splash pipe	1
18	N01001	4821	螺母M4	Nut	1
19	30121022	240006	JK-8568 Φ 4 \times Φ 6油管	Tube	0.42M
20	30121022	240006	JK-8568 Φ 4 \times Φ 6油管	Tube	0.3M
21	3022100800	255094-91	油管组件	Oil splash pipe	1
22	S01001	7018	螺钉M4 \times 7	Screw	1
23	30121021	240135	JK-8568 Φ 5 \times Φ 7油管	Tube	0.15M
24	30236005	255123	双头油管接头	Joint	1
25	30723007	2551400	油毡	Felt	1
26	20123021	202176	油线	Oil string	0.05M
27	30736001	2551390	油管	Pipe	1
28	30736002	2405680	油管 Φ 2.5 \times Φ 4.5	Tube	1
29	30711004	2551370	油管卡簧	Clamp	1
30	30736003	2550380	油管接头	Joint	1
31	201S30004	200152	过油螺钉	Screw	1

注: []点划线框表示暂时不用或已改进的零部件。

十七、油泵部件 / Oil pump assemblies

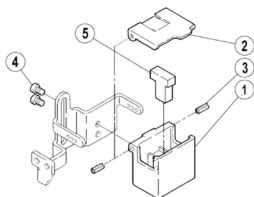


十七、油泵部件 / Oil pump assemblies

序号 Ref. No.	件号 Part No.	参考件号 Ref.Part.No.	名 称	Description	数量 Amt.
1	30201029	255000	油盘	Oil reservoir	1
2	20528014	202287A	垫圈	Washer	1
3	301S11015	5138B	堵油螺钉	Screw	1
4	S05007	4504	螺钉M8×20	Screw	4
5	30222014	255001	油盘密封圈	O ring	1
6	3022000100	255040-91	油泵组件	Oil pump assy	1
7	30102031	255024	油泵轴	Shaft	1
8	30120004	255025	五星轮	Rotor	1
9	30120007	255026	五星轮	Rotor	1
10	30120005	255027	五星套	Rotor	2
11	30120008	255028	油泵盖	Cover	1
12	S05006	7026	螺钉M4×25	Screw	2
13	301S20011	7105	油泵螺钉	Screw	2
14	30125003	255019	油泵蜗轮	Worm wheel	1
15	S10002	4514	螺钉M5×5	Screw	2
16	S05005	4501	螺钉 M5×12	Screw	2
17	301S30014	-----	过油螺钉	Joint screw	2
18	20136001	206233	滤油器	Filter element	1
19	301S30016	210200	螺钉	Screw	1
20	O01010	206431	O型圈 38.7×3.55	O ring	1
21	300140	210201-SD	滤油器盖	Cover	1
22	S01003	7021	螺钉M4×12	Screw	3
23	30131004	9A3002	提示说明	Filter seal	1

注：□□□点划线框表示暂时不用或已改进的零部件。

十八、硅油盒装置部件 / Silicon oil delice assemblies

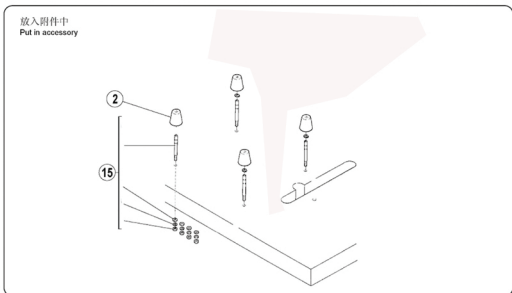
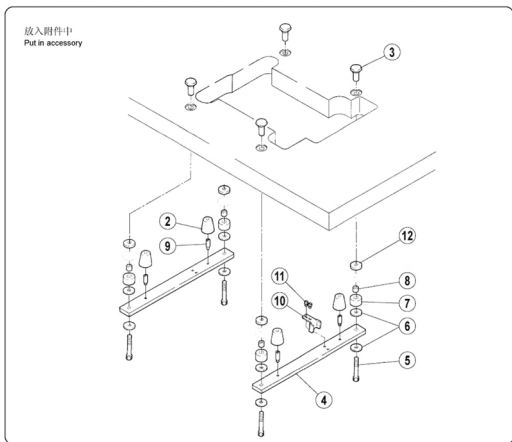


十八、硅油盒装置部件/Silicon oil delice asscmblies

序号 Ref. No.	件号 Part No.	参考件号 Ref. Part No.	名称	Description	数量 Amt.
1	30111070		上硅油盒	silicone oil reservoir	1
2	30112040	207067-UD	硅油盒盖	cap	1
3	P03008	206781	销2×6	pin	2
4	S01006	7009	螺钉3×4.5	screw	2
5	30123011	207068	硅油棉	felt	1

注: [] 点划线框表示暂时不用或已改进的零部件。

十九、油盘托板部件 / Oil plate assemblies

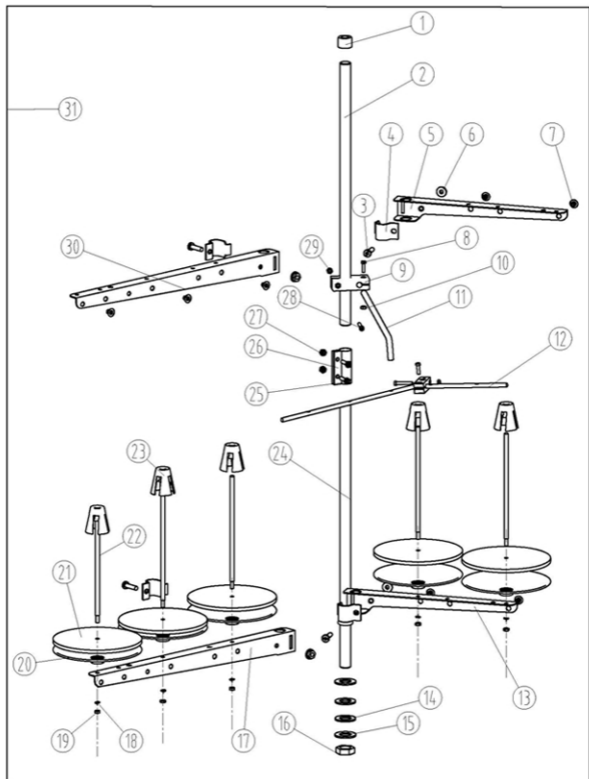


十九、油盘托板部件/Oil plate assemblies

序号 Ref. No.	件号 Part No.	参考件号 Ref. Part No.	名称 Name	Description	数量 Amt.
2	30122029	206338	油盘减振垫	rubber cushion	4
3	20131028	206336	托盘螺钉固定头	nut	4
4	30112198	259000	油盘托板	rest board	2
5	20131027	4512	托板螺钉	bolt	4
6	20131029	206337	大垫圈	washer	8
7	20131030	205764	防振套	cushion rubber	4
8	30103078	205765	防振垫支撑套	liner	4
9	301S30018	7093	螺钉	screw	4
10	30112041	206329	链条挡板	treadle chain guide	1
11	S01011	7028	螺钉M5×10	screw	2
12	30122031	205467	减震垫圈	spacer	4
15	305S11018		安装螺钉(一套)	screw(set)	1

注: [---] 点划线框表示暂时不用或已改进的零部件。

二十、线架部件 / Thread spool assemblies

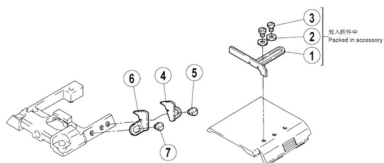


二十、 线架部件(Thread spool assemblies)

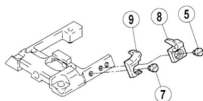
序号 Ref.No	公司件号 Part No	参考件号 Ref. Part. no	名称	Description	数量 Number
1	20131019		棒帽	Rod Cap	1
2	20131001		上管	Upper thread column	1
3	20131020		导线环螺钉	Screw	4
4	20131016		导线环	Thread spool tray	1
5	20131016		导线架	Thread spool tray	1
6	201516006		导线环螺母	Thread guide hook nut	4
7	20131018		过线环	Thread guide hook	5
8	20131021		棒架螺钉	Screw	2
9	20131009		棒架	Clamp plate	1
10	201516004		螺母	Nut	4
11	20131011		导线棒	Thread guide bar	1
12	30113019		过线棒	Thread guide	4
13	20131017		托线架	Thread spool tray	1
14	20122049		防震垫	Plate dog link washer	2
15	20128025		下管垫圈	Lower washer	2
16	201516005		螺母	Nut	1
17	20131004		托线架	Thread spool tray	1
18	20128018		垫圈	Washer	5
19	201516004		螺母	Nut	4
20	20131007		线盘	Spool tray	5
21	20131010		线盘垫	Spool tray cushioning	5
22	20131006		线托棒	Spool pin	5
23	20131008		线圈定位套	Spool Cushion	5
24	20131004		托线架	Thread spool tray	1
25	S04050		螺钉 M5×15	Screw	2
26	20131003		套	Bushing	1
27	N01030		套螺母	Nut	2
28	20131022		棒架螺钉	Screw	2
29	201516004		螺母	Nut	4
30	20131015		导线架	Threadspooltray bracket	1
31	20131074		线架组件	Thread stand component	1

二十一、专用部件(1) / Specific parts (1)

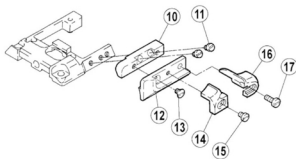
JK8670-01E



JK8670-03F



JK8670-03G



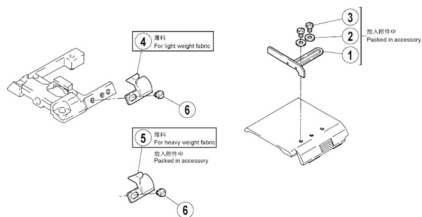
二十一、专用部件(1) / Specific parts (1)

序号 Ref. No.	件号 Part No.	参考件号 Ref.Part.No.	名 称	Description	数量 Amt.
1	30701025	2581670	缝料挡块(右)	Fabric guide (right)	1
2	W01012	210585	垫片2.5	Washer	2
3	S01012	0071560	螺钉M2.5×3.4	Screw	2
4	-----	2581760	缝料导规(右)	Fabric guide (right)	1
5	S01036	7154	螺钉M3×3	Screw	1
6	-----	2581770	缝料导规(左)	Fabric guide (left)	1
7	S01036	7154	螺钉M3×3	Screw	1
8	30701018	2581690	缝料导规(右)	Fabric guide (right)	1
9	30701019	2581700	缝料导规(左)	Fabric guide (left)	1
10	30701020	2581740	支架	Bracket	1
11	S01036	7154	螺钉M3×3	Screw	2
12	30701021	2581750	支架	Bracket	1
13	S01026	70400	螺钉M3×4	Screw	1
14	30202998	2575750	缝料导规(左)	Fabric guide (left)	1
15	S01036	7154	螺钉M3×3	Screw	1
16	30202999	2575760	缝料导规(右)	Fabric guide (right)	1
17	207S11017	0070110	螺钉M3×8	Screw	1

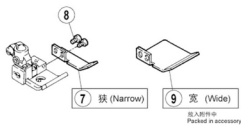
注：[]点划线框表示暂时不用或已改进的零部件。

二十二、专用部件(2) / Specific parts(2)

JK8670-08



JK8670-08B

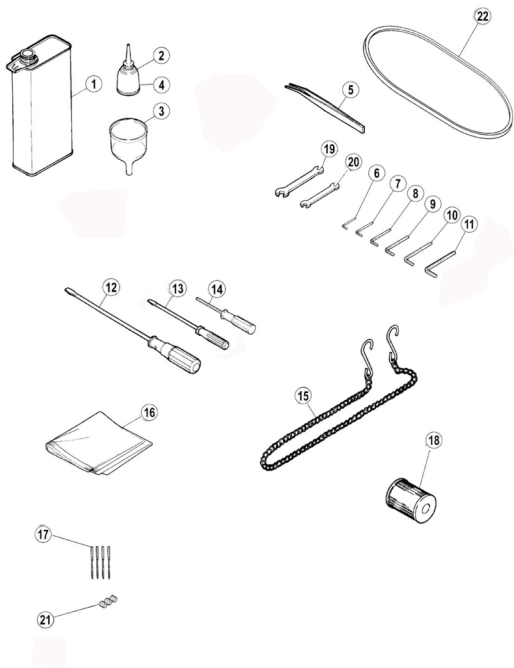


二十二、专用部件(2) / Specific parts(2)

序号 Ref. No.	件号 Part No.	参考件号 Ref.Part.No.	名 称	Description	数量 Amt.
1	30701025	2581670	缝料挡块(右)	Fabric guide (right)	1
2	W01012	210585	垫片2.5	Washer	2
3	S01012	0071560	螺钉M2.5×3.4	Screw	2
4	3070102200	2581780	缝料导块(左)	Fabric guide (left)	1
5	3070102300	2581790	缝料导块(左)	Fabric guide (left)	1
6	S01036	7154	螺钉M3×3.5	Screw	1
7	30212026	257761A	压脚辅助板(窄)	Fabric guide	1
8	S01063	7031	螺钉M2.5×6	Screw	2
9	30212025	257761	压脚辅助板(宽)	Fabric guide	1

注：□□□点划线框表示暂时不用或已改进的零部件。

二十三、附件部件 / Accessories assemblies



二十三、附件部件 / Accessories assemblies

序号 Ref. No.	件号 Part No.	参考件号 Ref.Part.No.	名称	Description	数量 Amt.
1	20131037	-----	油壶(大)	Oil container	1
2	20131038	-----	硅油壶	Oiler	1
3	20131039	-----	漏斗	Oil funnel	1
4	20131039	-----	硅油	Container silicone	1
5	20131038	-----	镊子	Tweezers	1
6	30131007	-----	内六角扳手(1.5mm)	Allen key/1.5mm	1
7	20131046	-----	内六角扳手(2mm)	Allen key/2mm	1
8	30131010	-----	内六角扳手(3mm)	Allen key/3mm	1
9	30131012	-----	内六角扳手(4mm)	Allen key/4mm	1
10	20131047	-----	内六角扳手(5mm)	Allen key/5mm	1
11	20131056	-----	内六角扳手(6mm)	Allen key/6mm	1
12	20731047	-----	螺丝刀	Screw driver (medium)	1
13	10131003	-----	螺丝刀(小)	Screw driver (small)	1
14	20131044	-----	内六角扳手(1.5mm直柄)	Allen key driver (1.5mm)	1
15	30131018	-----	链条	Chain	1
16	40131017	-----	机头罩	Dust cover	1
17	30117001	-----	机针	Needle	4
18	20136001	-----	滤油器	Filter element	1
19	30131005	-----	扳手(7mm~9mm)	Wrench/(7mm-9mm)	1
20	30131006	-----	扳手(8mm~10mm)	Wrench/(8mm-10mm)	1
21	S01005	-----	螺钉 M3x3	Screw	1
22	30135004	-----	皮带	Leather belt	1

注：[]点划线框表示暂时不用或已改进的零部件。

JK8670 缝纫组合件表 (1)

JK8670 GAUGE PARTS LIST(1)



机型 MACHINE TYPE /SPEC.	缝样 GAUGE	针古 NEEDLE HOLDER	针板 NEEDLE PLATE	主送布牙 MAIN FEED DOG	差动送布牙 DIFF FEED DOG	压脚 PRESSER FOOT	弯针 LOOPER	护针 NEEDLE GUARD		喂针 SPREADER	机针 NEEDLE
								护针 (前) FRONT	护针 (后) REAR		
8670-01CB	356	30134001	30715004	30714003	30714004	3011601300	30217003	30717002	30717001	30117005	30717001(11#)/ 30717011(14#)
	364	30134002	30715006			3011601400					
8670-03FB	356	30134001	30715003	30714001	30714002	3011601300	30217003	30717002	30717001	30117005	30717001(11#)/ 30717011(14#)
	364	30134002	30715005			3011601400					
8670-03GB	356	30134001	30715003	30714001	30714002	3011600300	30217003	30717002	30717001	30117005	30717001(11#)/ 30717011(14#)
	364	30134002	30715005			3011600400					
8670-08AC	356	30134001	30715004	30714003	30714004	3011601300	30217003	30717002	30717001	30117005	30717001(11#)/ 30717011(14#)
	364	30134002	30715006			3011601400					

工业缝纫机安全使用注意事项:

1. 必须遵守基本措施;
2. 必须经过专业培训, 对缝纫机设备性能、
3. 使用前应检查所有安全装置;
4. 在安装机针、更换机针、压脚、针板、送布牙、弯针、旋梭或修理时, 应立即关闭电源;
5. 离开缝纫机或工作场所时应关闭电源;
6. 使用离合马达时, 要等待马达完全停止后再进行;
7. 缝纫机及附属装置使用的机油, 润滑油等液体流入眼睛或沾到皮肤上应立即清洗;
8. 禁止用手触摸缝纫机通电时的零件或装置;
9. 有关工业用平缝机与包缝机的修理、改造、主要机构的调整由专门技术人员来进行;
10. 一般的维修保养由专人进行;
11. 在电气方面的修理应在电气技术员的监督和指导下进行;
12. 缝纫机使用期间应定期清扫;
13. 为了正常安全运转, 应安装地线, 同时应在不受高频焊接机等强噪声源影响的环境下使用;
14. 电源插头应由专人安装;
15. 工业用平缝机、包缝机在指定用途以外不能使用。

环保要求:

- 1、使用过程中产生的废油及其他废弃物请根据当地环保的要求进行合理的处置。
- 2、请在使用完后及时关闭电源, 减少电能的消耗。
- 3、请在说明书要求的电压及环境下使用, 已延长产品的使用寿命, 减少废弃物的产生。
- 4、机器报废后请勿将本机器及其附件作为普通的生活垃圾处理。请遵守本设备及其附件处理的本地法令, 并支持回收行动。

Notes for safe use of industrial sewing machines:

1. Basic measures must be observed.
2. Pass the specialized training and master sewing machine equipment performance.
3. All safety devices should be checked before use.
4. When installing needle, and changing needle, presser foot, plate, feed dog, bent needle, hook or repairing, the power supply should be turned off immediately.
5. Power should be turned off when leaving the sewing machine or workplace.
6. When using the clutch motor, please wait until the motor stops completely.
7. The machine oil and other liquids used in sewing machines and ancillary devices should be cleaned immediately when they are put into eyes or touch skin.
8. Do not touch the parts or devices when the machine is powered by hand.
9. The repair, renovation and adjustment of the main mechanisms of the relevant industrial sewing machines and overseers shall be carried out by specialized technicians.
10. General maintenance is carried out by specially-assigned persons.
11. Electrical repairs should be performed under the supervision and direction of the electrical technician.
12. The machine should be cleaned regularly during operation.
13. In order to operate normally and safely, ground lines should be installed, and they should be used in an environment free from strong noise sources such as high frequency welding machine.

14. Power plug should be installed by specially-assigned person.
15. Industrial lockstitch sewing machine and overlock sewing machine can not be used except the designated use.

Environmental requirements:

1. Please dispose the waste oil and other waste products properly according to local environmental protection requirements.
2. Please turn off the power after use to reduce power consumption.
3. Please use under the voltage and environment required in the manual to extend the service life of the product and reduce waste generation.
4. Do not treat the machine and its accessories as ordinary household garbage after being scrapped. Please comply with local laws governing th

杰克缝纫机
全球销量遥遥领先
Leading in global sales

400-8876-858
www.chinajack.com



JACK SEWING MACHINE CO.,LTD.

2019年1月份 Edition: January, 2019

杰克缝纫机股份有限公司

浙江省台州市椒江区机场南路15号
电话 :0086-576-88177788 88177789
传真 :0086-576-88177758
产品标准代号 : Q/TK 007-2017
资料如有更改, 恕不另行通知, 以实样为准

JACK SEWING MACHINE CO.,LTD.

No. 15 Airport South Road, Jiaojiang District, Taizhou, Zhejiang, PRC
TEL: 0086-576-88177782 88177767 E-mail: sales@chinajack.com
FAX: 0086-576-88177787 www.chinajack.com

Standard code of the products: Q/TK 007-2017
You will be not informed if the file has been revised. Please set sample as standard.